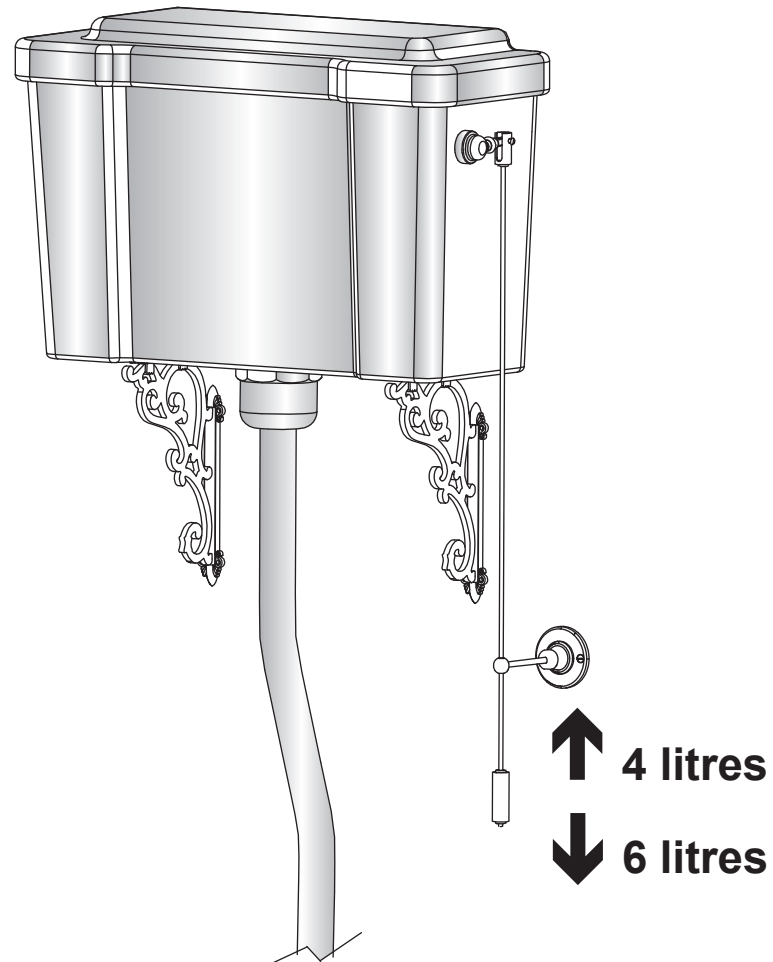
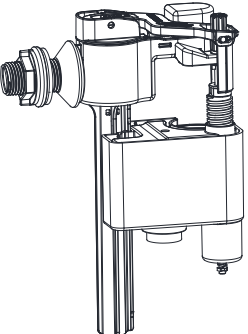
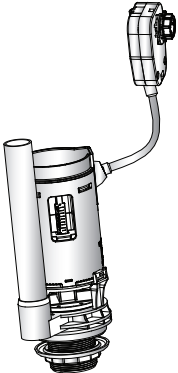



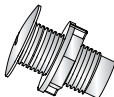





On the High Level WC you must lightly pull the rod down for the 6 litre flush and lightly push the rod up for the 4 litre flush



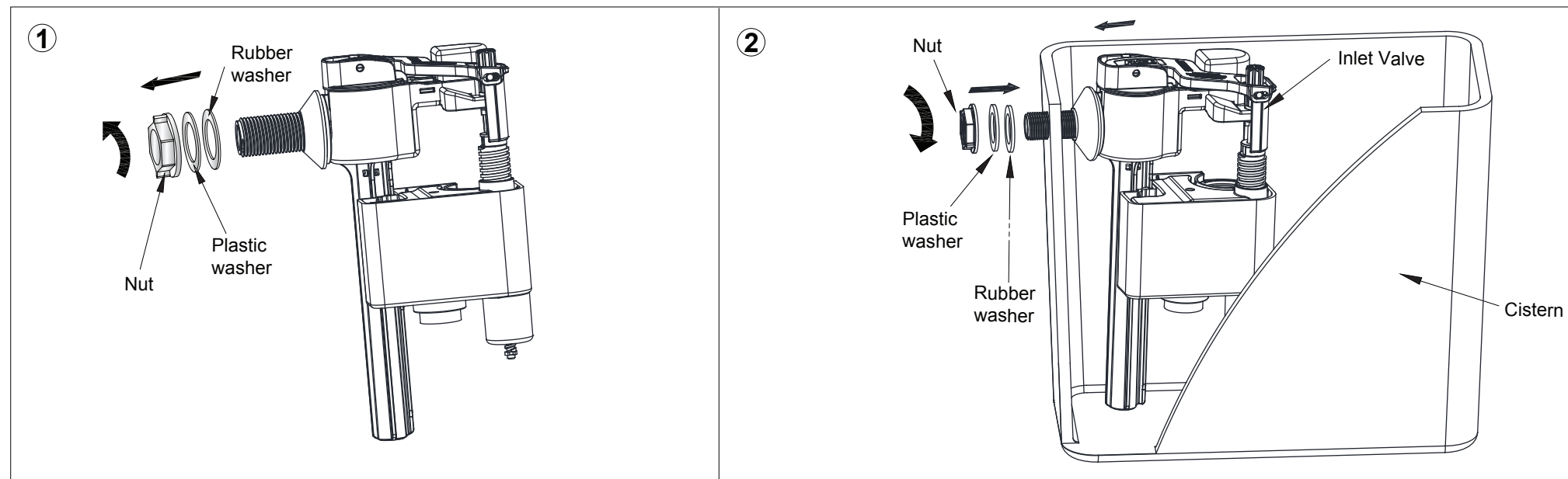
Please note that it is imperative that there are no loops or kinks in the yellow tube when installed and that the lever is not operated with excessive force as this will damage the cable inside the tube that lifts and lowers the flush valve causing the flush to fail beyond repair

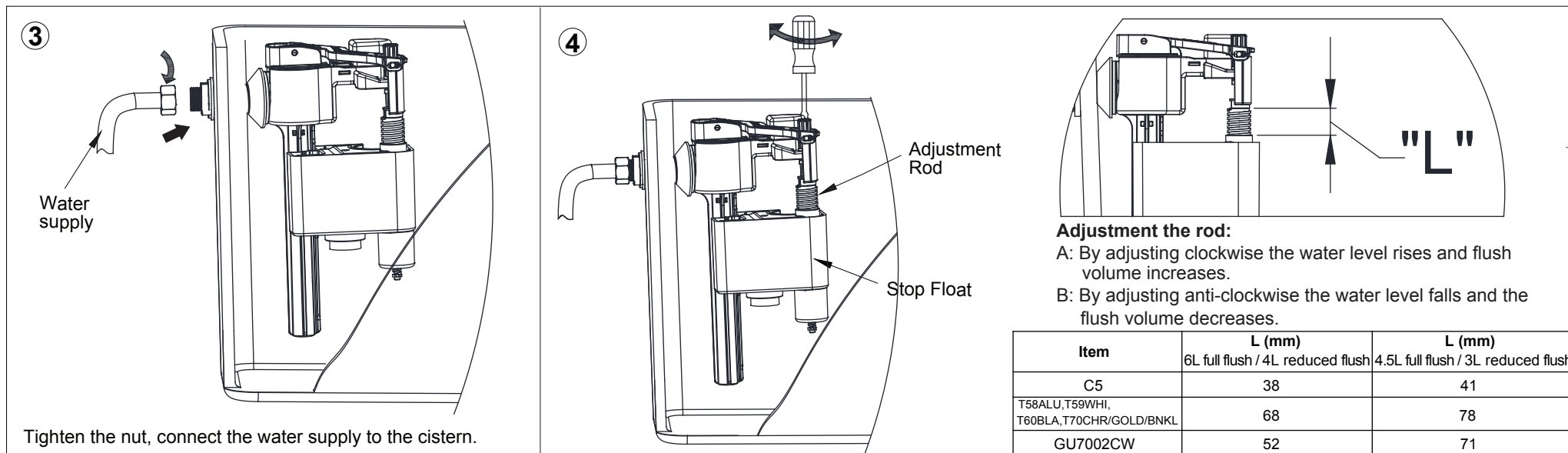
Parts supplied:

 <p>Inlet Valve 1x</p>	 <p>Flush Valve 1x</p>	 <p>Lever 1x</p>	 <p>Flush Cone 1x</p>	 <p>Plastic Washer 1x</p>
		 <p>Cap 2x</p>	 <p>Noise reducer 1x</p>	 <p>Cone Washer 1x</p>
			 <p>Fixing Nut 1x</p>	

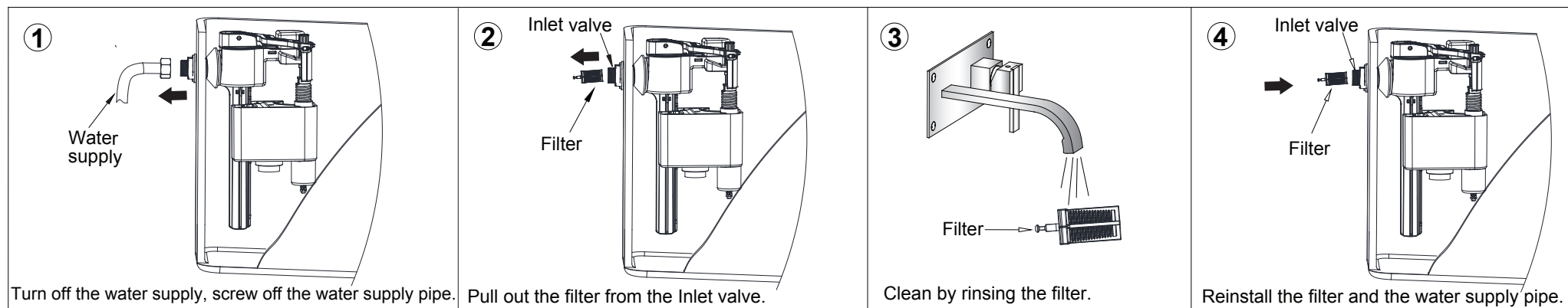
- Please read these instructions carefully to avoid damage to the valves, and to ensure correct installation.
- Do not use bleach or bleach based cleaning products in the cistern, as these will cause damage to the seals. We cannot be held responsible or liable for any failure which results from the use of bleach based products.
- Water temperature range +2C to +45C.
- Water pressure 0.2 to 8 bar.

1: Inlet Valve installation and adjustment settings





2: Filter cleaning (Please clean periodically)



3: Inlet Valve trouble shooting

Problem	Reason	Solution
Incorrect water level	Incorrect adjustment.	Adjust the Water level correctly as per diagram above.
Inlet Valve does not work	Water supply is closed.	Open the water supply
	The filter is blocked.	Clean the filter.
	The Stop Float has been over adjusted beyond its operational range.	Adjust the adjustment rod.
Leakage	The Inlet Valve fixing nut has not been tightened.	Tighten the nut.

Flush Valve Installation And Problem Solving

1: Flush Valve scale and adjustment setting

Note: The below diagram is for reference only. In this sample, ① is set to 2.5, ② is set to 5, ③ is set to 1.5
The flush valve can be adjusted to suit the particular cistern, please refer to below tables for the settings.
For adjustment method, please refer to the adjustment setting on right side.

Cistern	Scale	6L full flush / 4L reduced flush	4.5L full flush / 3L reduced flush
C5	① Half Flush Float	2.5	4.5
	② Half Flush Adjustor	5	5
	③ Full Flush Adjustor	1.5	6
T58 ALU T59 WHI T60 BLA T70 CHR	① Half Flush Float	3	5
	② Half Flush Adjustor	5	5
	③ Full Flush Adjustor	2.5	6
GU7002CW	① Half Flush Float	1	1
	② Half Flush Adjustor	5	2
	③ Full Flush Adjustor	1.5	1.5

Full flush adjustor

② Move adjustor down, flush volume increases.
Move float up, flush volume decreases.

Half flush float

① Move float down, flush volume increases.
Move float up, flush volume decreases.

Half flush adjustor

③ Move adjustor down, flush volume increases.
Move float up, flush volume decreases.

2: Flush Valve installation

①

Flush Valve Seat

Fixing nut

Screw off the fixing nut and discard.

②

Noise reducer

If necessary, the noise reducer supplied can be fitted.

③

Flush Valve Body

Fix the flush valve body onto the flush valve seat.

④

Flush Valve

Brass nut

Cistern

Use the brass nut from High Level Flush Pipe Kit to fix the Flush Valve onto the cistern.

⑤

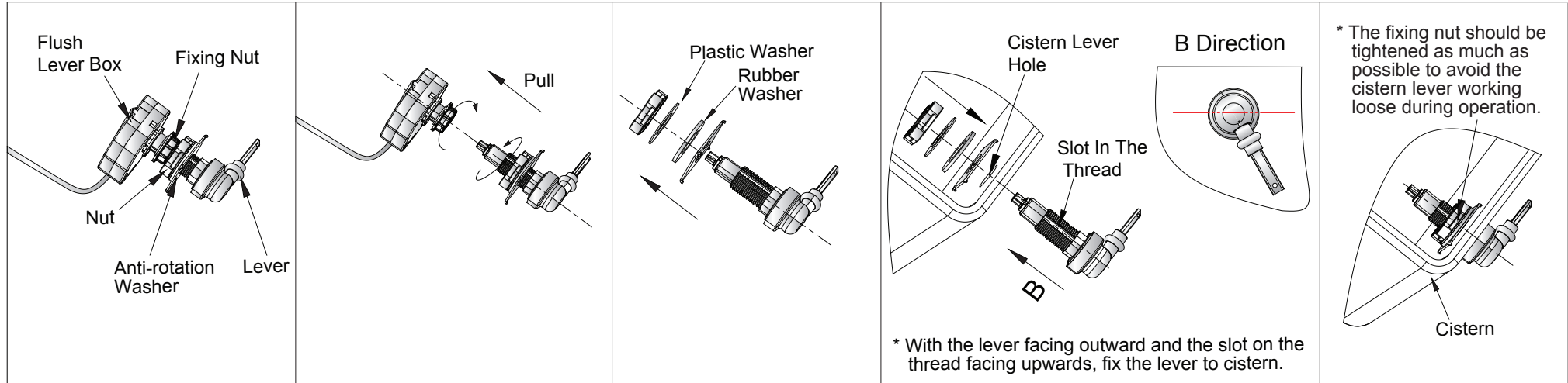
Cistern

3: Flush Valve trouble shooting

Problem	Reason	Solution
Leakage	1. Incorrect installation. 2. Flush valve seat does not fit flush valve body. 3. Flush valve body is stuck.	1. Install again according to the correct installation procedure. 2. Install again. 3. Disconnect and wash flush valve body.
No flush, low flush or half flush volume	Cable is distorted.	Remove kinks or sharp bends in the cable.
Half flush water level is too high or too low.	Water level is adjusted incorrectly.	Adjust water level.

Flush Lever Installation

1: Install Flush Lever Onto Cistern



2: Install Lever To Flush Lever box

