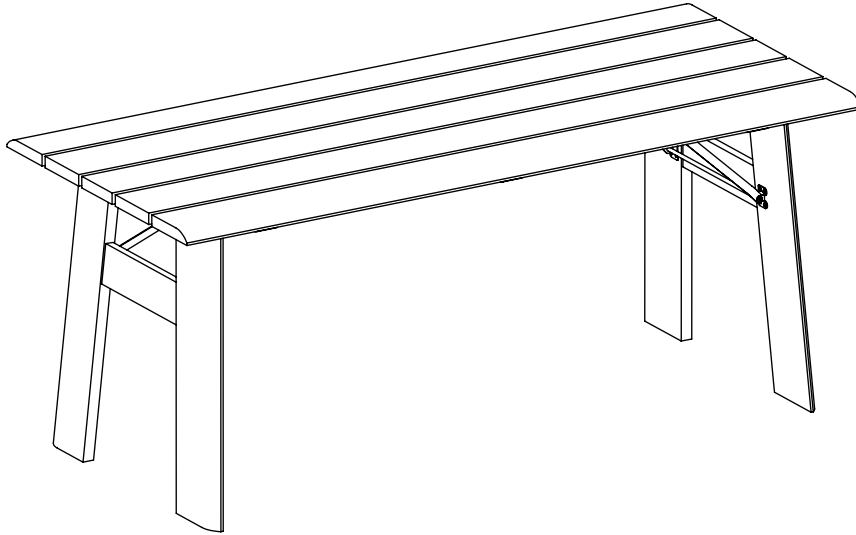


Thank you for purchasing this Outdoor Table Avenue. Please read the instructions carefully before use to ensure safe and satisfactory operation of this product.



Pre-assembly preparation

Please ensure instructions are read in full before attempting to assemble this product.

People to assemble



No tools required

Please check the pack contents before attempting to assemble this product. A full checklist of components is given in this leaflet. If any components are missing, please contact the retailer from whom you bought this product.

This product is **HEAVY**, it should be assembled as near as possible to the point of use. **TAKE CARE WHEN LIFTING** to avoid personal injury and (or) damage to the product.

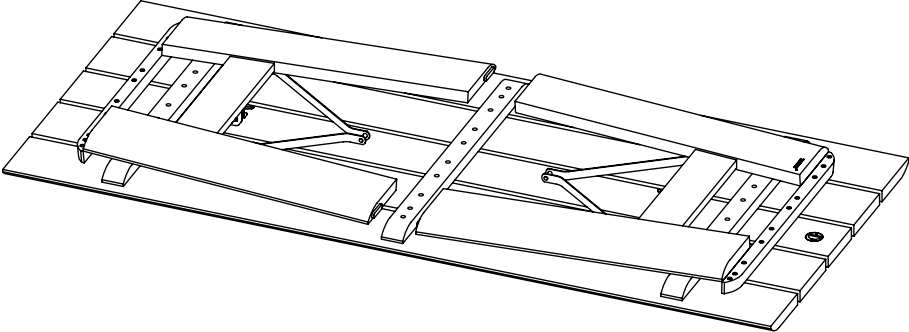
This product takes approximately **10 MINUTES** to assemble with **2 PEOPLE**.

The fittings pack contains **SMALL ITEMS** which should be **KEPT AWAY FROM YOUNG CHILDREN**.

Read this leaflet in full before commencing assembly.

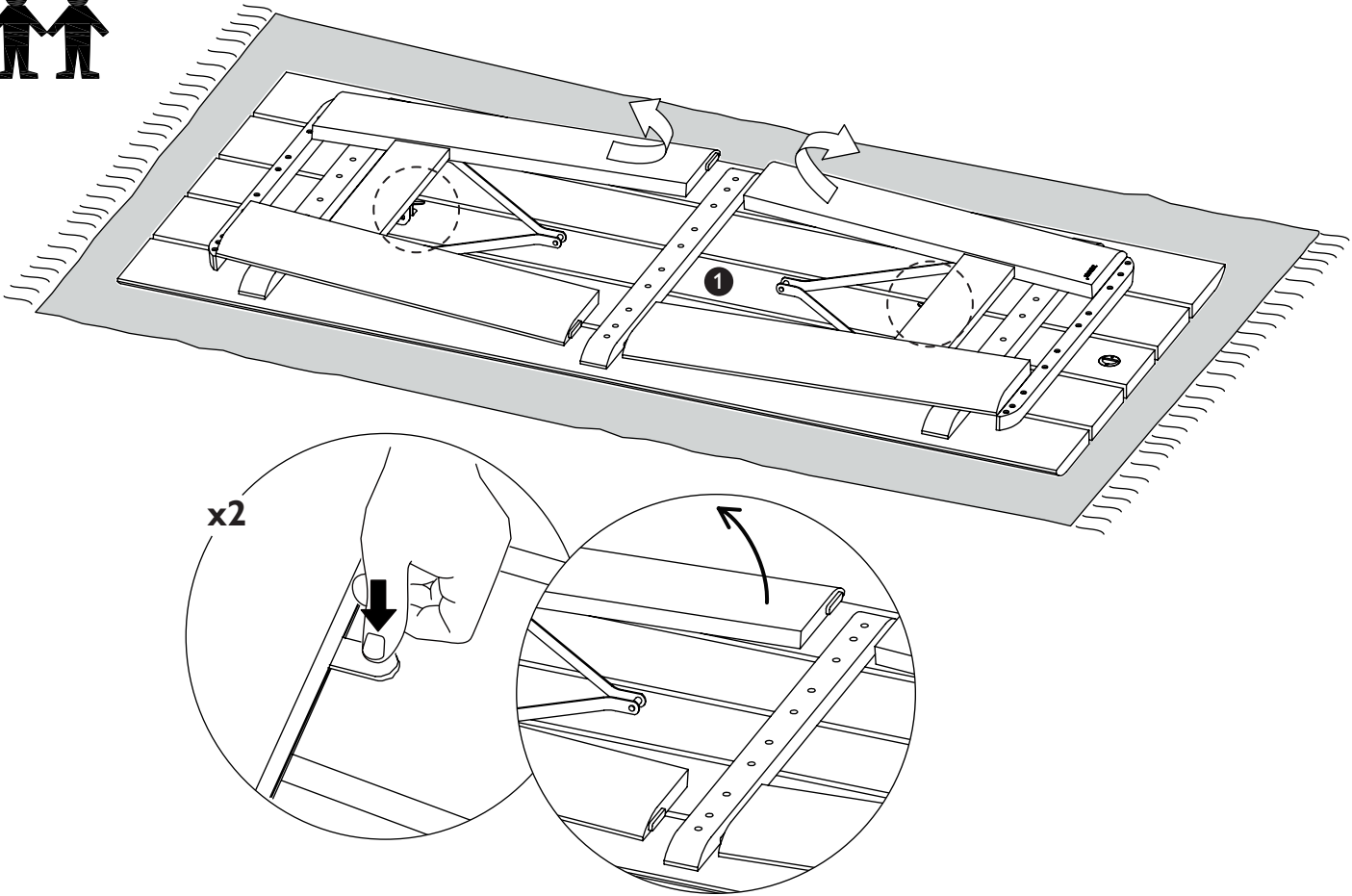
PLEASE KEEP THESE INSTRUCTIONS FOR FUTURE REFERENCE

Fittings and parts checklist

Parts checklist		
1	Table assembly x1	

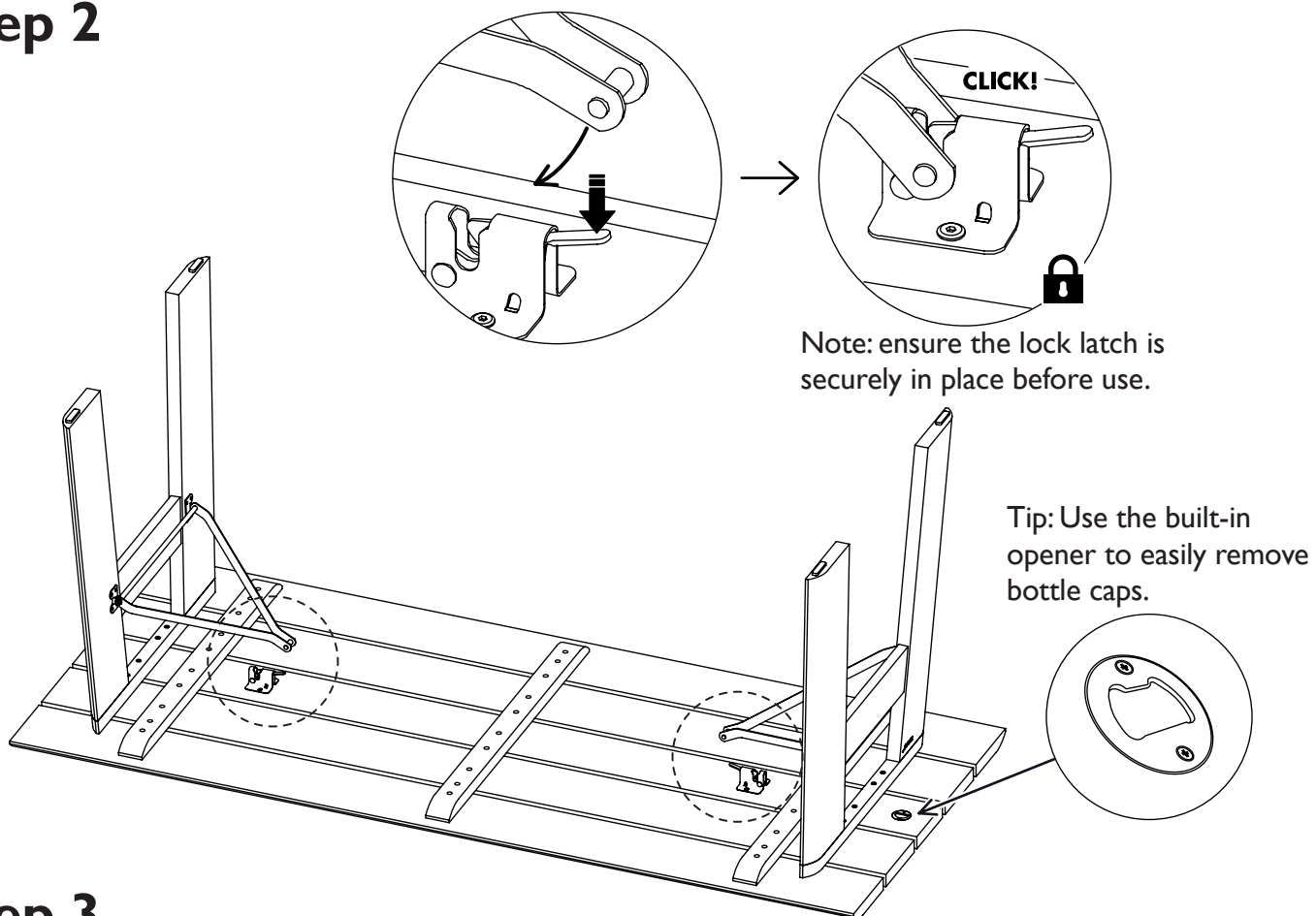
Step by step assembly instructions

Step 1

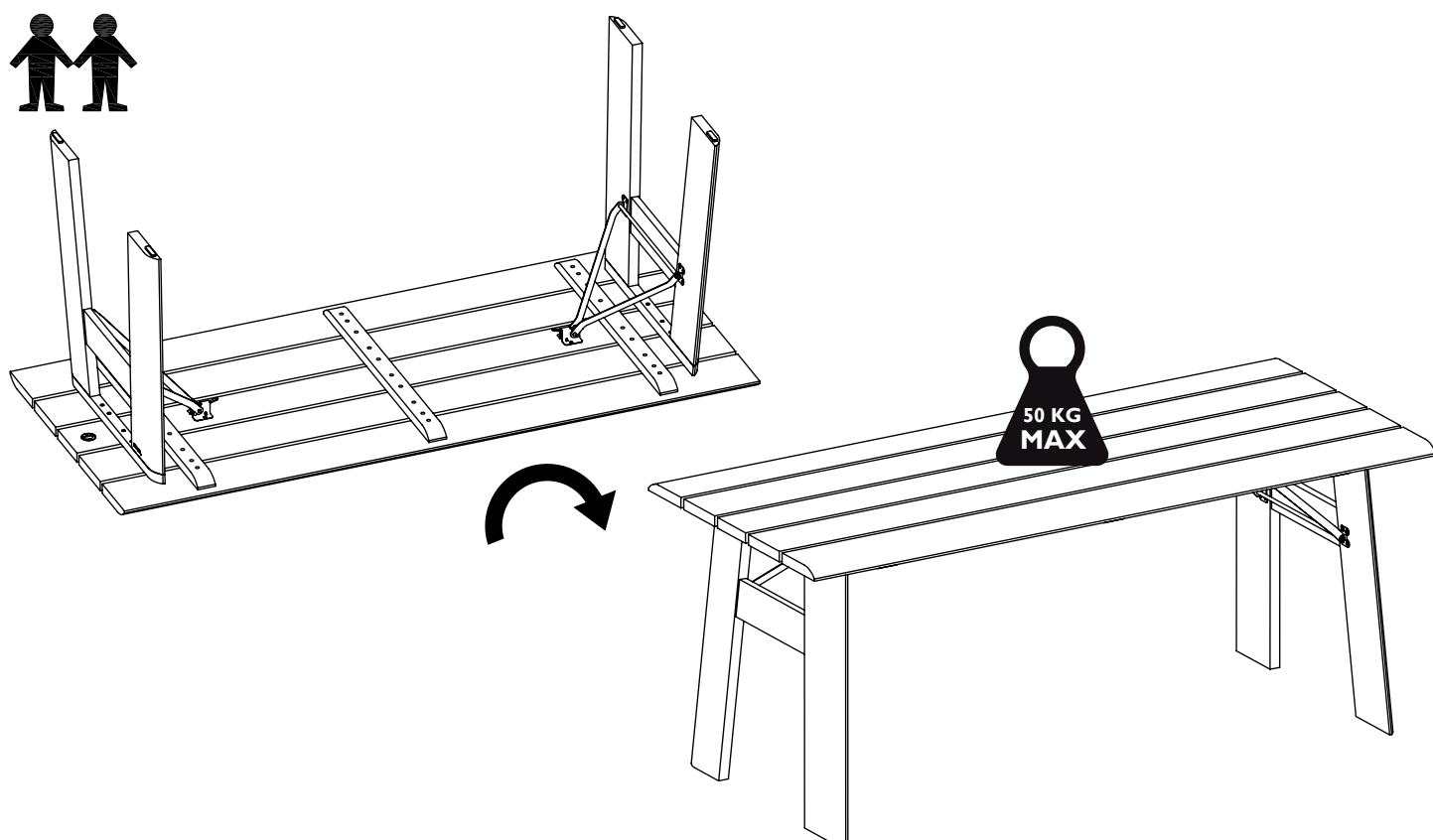


Step by step assembly instructions

Step 2



Step 3



Care and Maintenance

Wood furniture

- Wood displays different grain patterns depending on which way they cut - for example, the 'medullary rays' which can appear as a mark of good quality timber - these are just characteristics of the natural beauty of the wood. Some furniture is also deliberately aged and rustic.
- All timber surfaces will change colour and mellow over time. New furniture will initially vary in shade from items that have been previously purchased.

How to care for your outdoor wood furniture

- Furniture with a hard lacquer, wax polish or painted surface should be dusted with a soft dry cloth.
- Spray polishes are best avoided as they contain silicones which may spoil the furniture's surface by building up over time.
- Clean up any spills (eg. red wine, coffee, cola etc.) immediately to prevent stains and water rings.
- Clean with a mild soapy solution when needed. Wipe dry with a clean and dry cloth. Avoid using harsh or corrosive cleaning chemicals.
- Avoid placing hot or wet objects directly on the wooden surface. Use coasters or trays to protect the wood from heat and liquids.
- If possible, store in a cool dry place indoors. If the furniture is stored outside, cover it with a waterproof cover. After a rain or snowfall, wipe off excess water or snow from flat surfaces. Allow air to circulate to avoid condensation.
- The best way to extend the life of your wooden outdoor furniture is by cleaning it regularly and not leaving it outdoors unprotected more than necessary.
- Our furniture will endure most temperatures in the home but it is best to avoid placing furniture next to heat sources such as radiators or fires. Be particularly careful with solid wood as the lack of humidity caused by central heating can cause damage such as warping.

Safety instructions

- Never drag furniture when moving it, always lift it.
- Do not sit or stand upon this product.
- Periodically check all fixings to ensure none have come loose and re-tighten where necessary.
- Please take care when handling or moving the furniture, careless handling may cause damage or injury.
- Furniture can be dangerous if incorrectly installed. Assembly should be carried out by a competent person. No liability will be accepted for damage or injury caused by incorrectly installed or assembled furniture.
- It is recommended that before moving heavy objects to a new location they are completely dis-assembled to avoid personal injury or damage to the furniture. Please be careful to retain all fittings when doing this.

Experiencing problems with your new product?

Before calling customer service, please have your item's batch code ready.

You can find the batch code on the back or bottom of your product as below shown.

(example batch code: 200510)

