

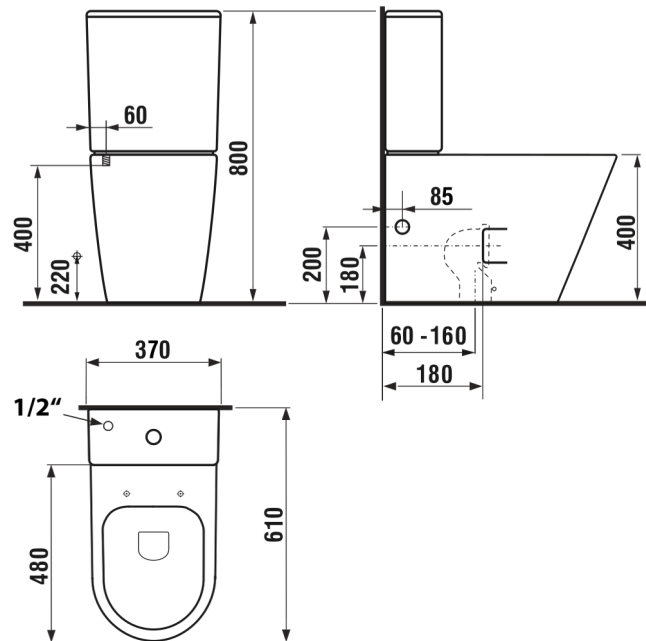
PACO PC1012R

WC combination rimless toilet with cistern including flushing set, bottom/rear outlet

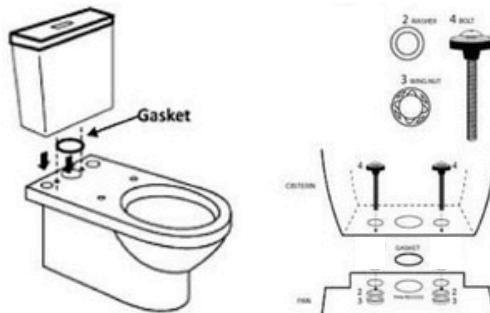
Installation manual

- Before installation, please check that the product has no visible defects.
- Please read this manual carefully before installation.

Technical drawing (dimensions shown in the diagram are preserved)

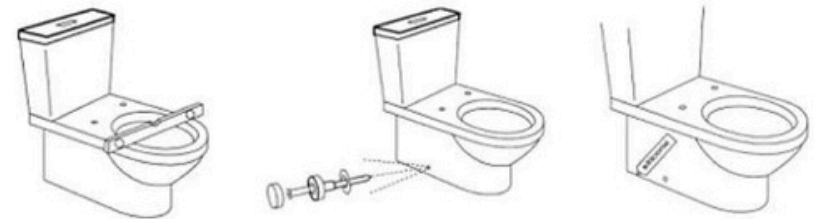
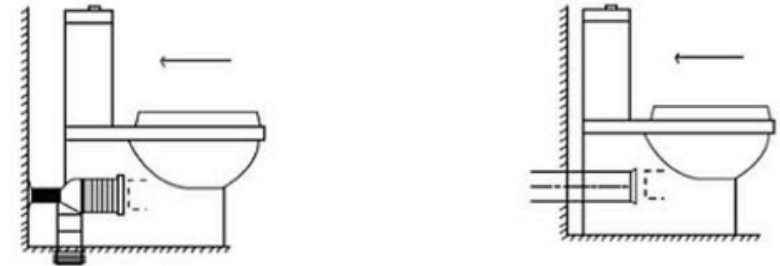


- Installation of the WC cistern onto the toilet bowl



- Bottom outlet

The bottom outlet can be created using a flexible connection to the WC pan (not included in the package).



Warning

- Do not use abrasive cleaners and/or materials.

Warranty conditions

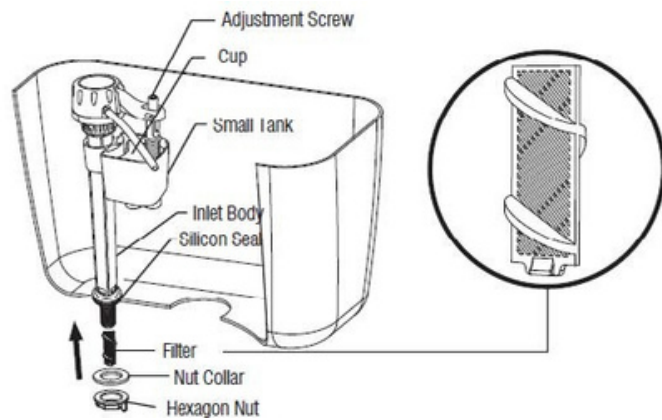
The warranty does not cover:

- Defects caused by incorrect installation
- Damage caused by modifications and construction changes performed by the user or a third party
- Mechanical damage
- Damage caused by chemical agents

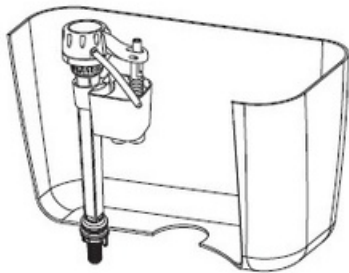
PACO PC1012R

WC combination rimless toilet with cistern including flushing set, bottom/rear outlet

Installation of the fill valve

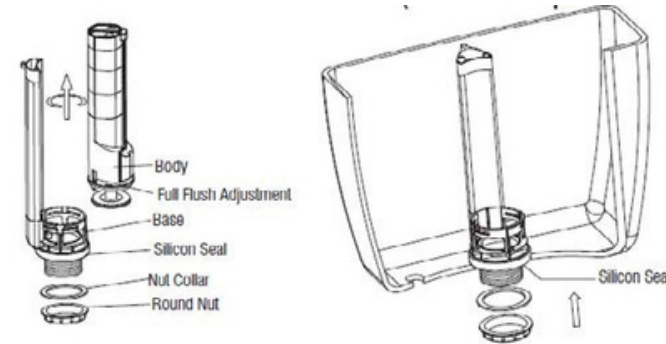


1. Unscrew the hexagonal nut and washer, insert the fill valve with the silicone gasket into the designated place. Then screw the hexagonal nut with the washer tightly to the fill valve and connect the fill tube with the overflow tube of the fill valve.

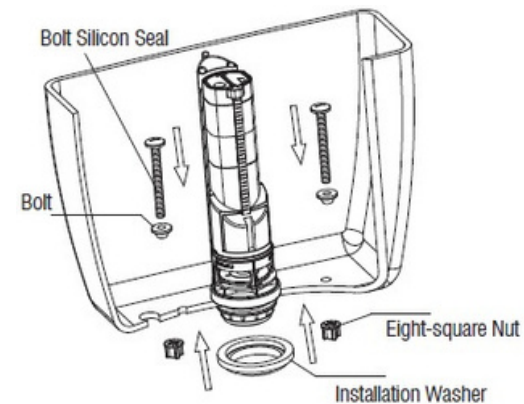


2. After connecting the water supply, adjust the water volume. By turning the adjustment screw clockwise or counterclockwise, set the float to the desired height.

Installation of the flush valve



1. Turn counterclockwise to remove the flush valve body. Unscrew the nut with washer.
2. Tilt and place the flush valve into the designated opening of the WC cistern. Make sure the valve is in the correct position and fit the nut with the gasket. Tighten the nut properly. Ensure that the silicone gasket is firmly placed on the bottom of the WC cistern and that the fill valve body is in a vertical position.



3. Hold the body of the flush valve and turn clockwise to reattach it. Place the gasket on the nut and mount the WC cistern onto the toilet bowl. Then use screws and silicone gaskets (as shown in the figure) and tighten the octagonal nut firmly. Adjust the flush volume by moving the small float up or down.