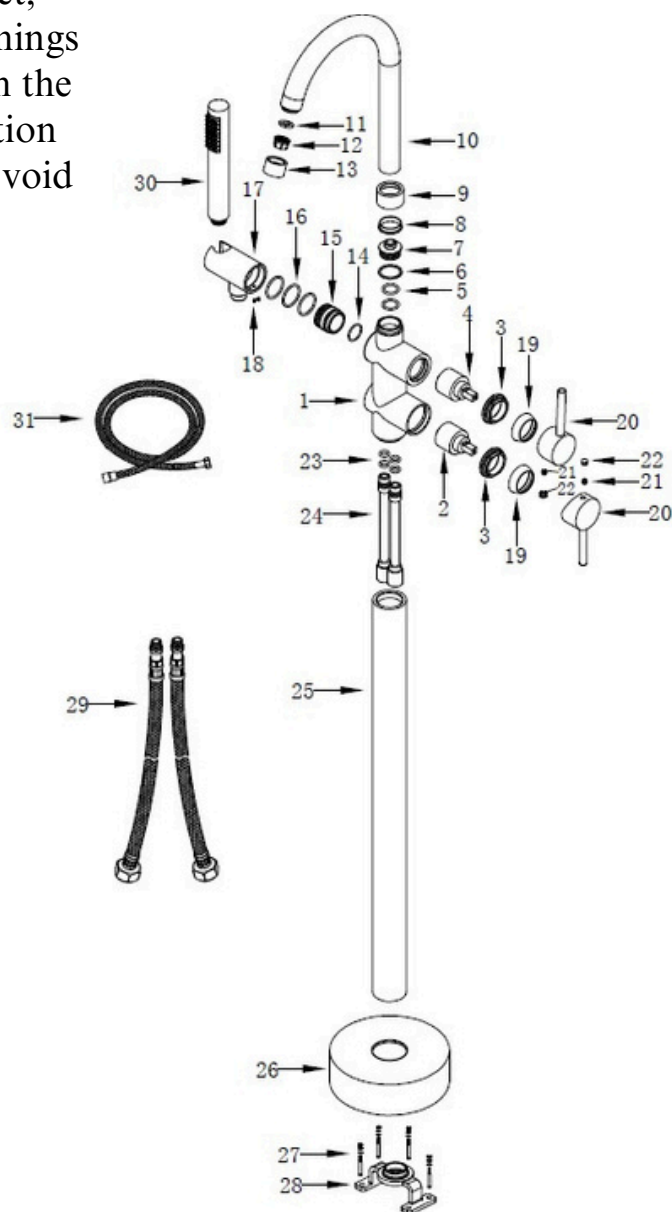


# INSTALLATION MANUAL

**ATTENTION!** Before installing the faucet, carefully read this manual as well as all warnings and operating recommendations included in the attached warranty card. Improper installation may result in damage to the faucet and will void the product warranty!

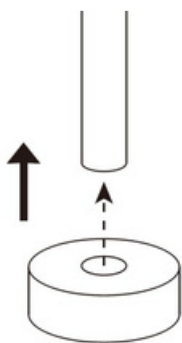


## GENERAL INFORMATION AND INSTALLATION/OPERATION RECOMMENDATIONS:

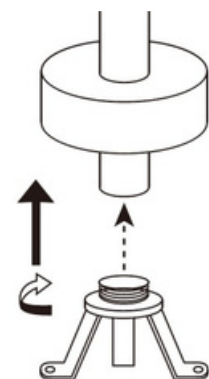
1. Before starting installation, check the completeness and compliance of the product with the order. If any shortages, defects, or damages (e.g. transport-related) are found, do not install the faucet.
2. The faucet should be used according to its intended purpose. Besco faucets are intended exclusively for domestic use. Any other use is considered improper. The faucet must not be used commercially.
3. Do not use in rooms where the air temperature falls below 4°C.
4. Before installing the faucet, thoroughly flush the water system to prevent possible contamination of faucet components (e.g. deposits, small particles of stone or rust) that could cause damage.
5. During installation, it is essential to ensure easy access to serviceable and naturally wearing parts, such as cartridges, switches, connection hoses, etc.
6. Faucets, especially components such as aerators, must be regularly cleaned with clean water or mild cleaning agents and dried with a soft cloth to prevent limescale build-up. Do not use corrosive, abrasive, or particle-containing agents that could damage the faucet surface, i.e. products not intended for this type of item.
7. Use wrenches with smooth, non-tightening jaws to avoid damaging faucet components.

## FAUCET INSTALLATION:

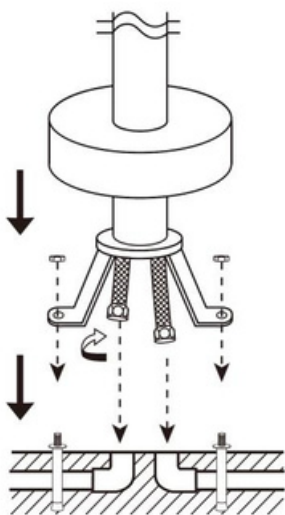
1. Prepare and flush the hot and cold water outlets.  
Place the base cover plate on the faucet body.



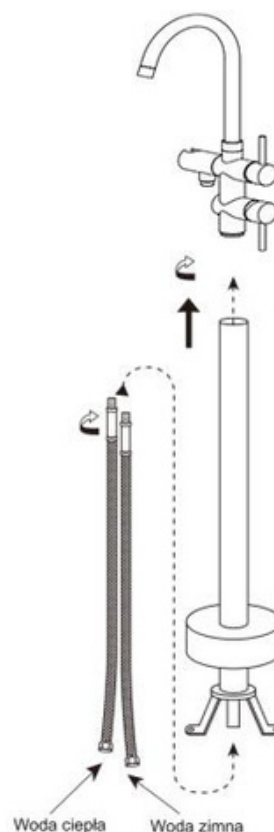
2. Next, screw the faucet base together with the body element, as shown in the diagram below.



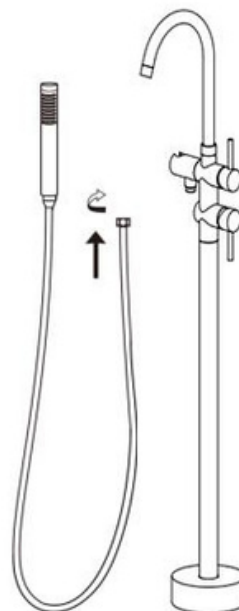
4. Install the faucet base onto the surface using the mounting elements included in the set. Then connect the supply hoses to the water supply pipes and cover everything with the decorative cover plate.



3. Connect the flexible hoses tightly to the main faucet body. Then connect both body elements together.



5. Install the shower hose and hand shower. Carefully check the installation and the tightness of all faucet components.



**ATTENTION!** Installation of a freestanding faucet must be entrusted exclusively to a qualified professional. Installation performed by unauthorized persons may result in damage to the product as well as to other bathroom elements, such as flooring and plumbing.