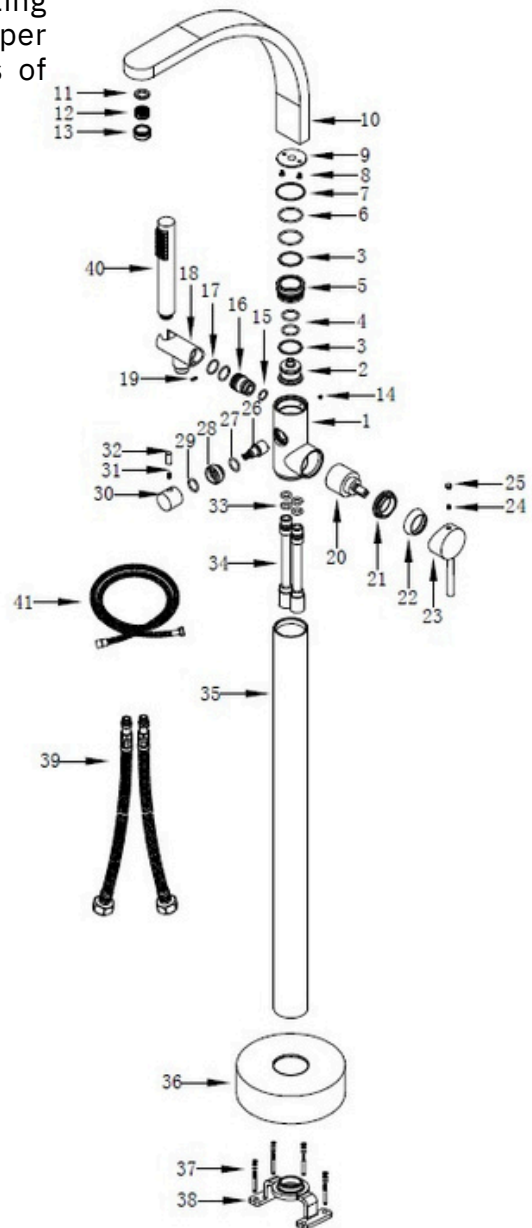


INSTALLATION INSTRUCTIONS – FREESTANDING BATHTUB FAUCET



IMPORTANT!

Before installing the faucet, carefully read these instructions along with all warnings and operating recommendations included in the warranty card. Improper installation may damage the faucet and result in loss of warranty coverage!

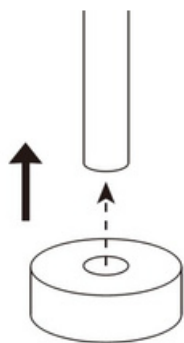


GENERAL INFORMATION AND INSTALLATION RECOMMENDATIONS

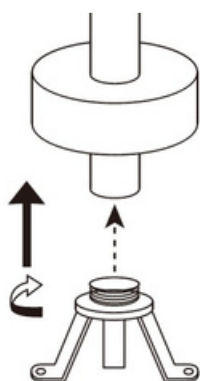
1. Before starting the installation, check that the product is complete and matches your order. If you find any missing parts, defects, or transport damage, do not install the faucet.
2. Use the faucet only as intended. Besco faucets are designed exclusively for domestic use. Any other use is considered improper. Do not use them for commercial purposes.
3. Do not install the faucet in environments where the air temperature falls below 4°C.
4. Before installing the faucet, flush the water supply system to remove any debris (such as sediment, small stones, or rust particles) that could damage the faucet.
5. Ensure easy access to components that may require maintenance over time, such as cartridges, switches, and connection hoses.
6. Regularly clean the faucet, especially components like the aerator, using clean water or mild cleaning agents. Dry with a soft cloth to prevent limescale buildup. Do not use aggressive, abrasive, or particle-containing cleaning agents that could damage the faucet's surface.
7. Use smooth-jawed wrenches to install the faucet to avoid damaging its components.

MONTAŻ BATERII:

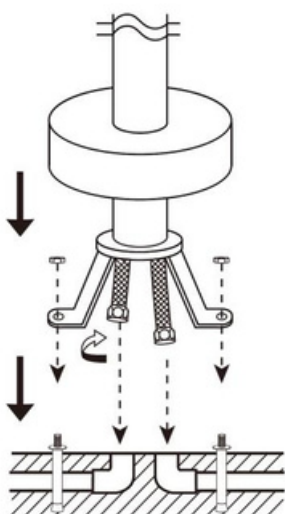
1. Prepare the water supply lines (hot and cold water) and flush them thoroughly. Place the base cover on the faucet body.



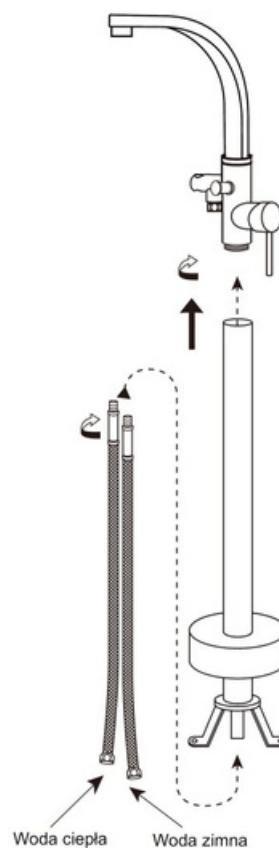
2. Attach the base to the faucet body according to the diagram.



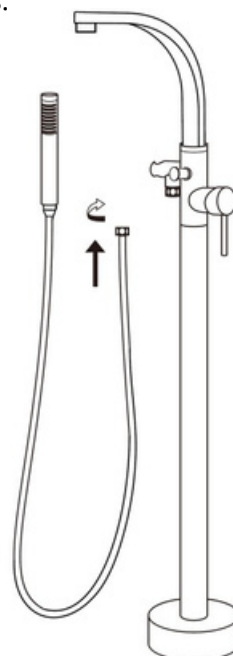
4. Secure the base to the floor using the included mounting hardware. Then, connect the supply hoses to the water pipes and cover everything with the decorative cover plate.



3. Connect the flexible connection hoses securely to the main faucet body. Then, join both faucet body sections.



5. Install the shower hose and handheld showerhead. Check the entire assembly for proper installation and water-tightness.



WARNING!

Installation of a freestanding faucet should only be performed by a qualified professional. Installation by unauthorized personnel may result in damage to the product and other elements of the interior, such as flooring or underfloor heating systems.

