

Fitting instructions

Please read the instructions and warning carefully before installing the product and ensure this document is kept with the product for future reference to ensure product longevity and in the interest of safety

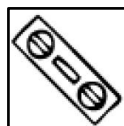
- This product is intended for domestic use only.
- Not for use in saunas, steam rooms.
- It is recommended that this product is installed by 2 people who are able to meet the level of competence required in order to comply with relevant regulations.
- This product is designed for installation into a brick or masonry block wall. If mounting onto other substrate, ensure appropriate fixing and batons are used (if required) and the load bearing of the wall is sufficient.
- When drilling use appropriate eye protection.
- Take care when using power tools near water – the use of a residual current device (RCD) is advised.
- Beware of hidden cables or pipes. Take care if drilling on tiled surfaces in case the drill slips.
- Ensure that excessive standing and Surface water is removed from the product to avoid long term damage and spoiling.



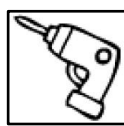
Pencil



Tape measure



Spirit Level



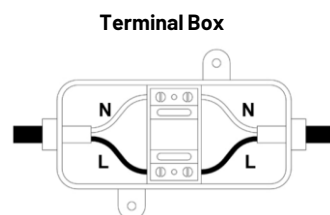
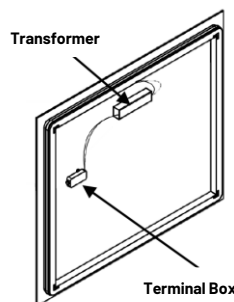
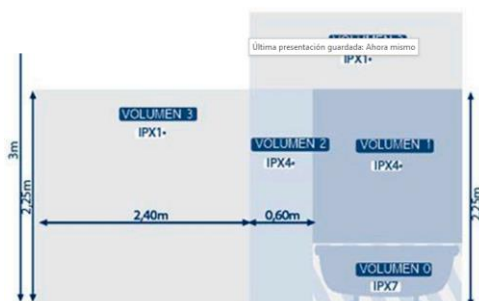
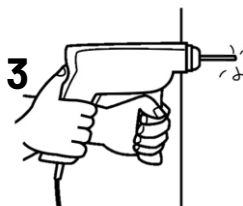
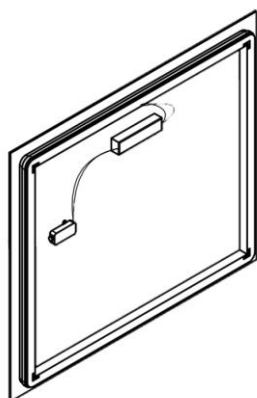
Drill



Suitable drill bit Ø6

Light LED mirror

1. Position the mirror in a suitable location.
2. Mark the position of the mirror ensuring it is level. Remove the mirror and mark the mounting points.
3. Using a suitable drill bit, drill holes in the marked positions to a suitable depth.
4. Insert wall plugs level with the surface of the wall.
5. Screw supplied fixings into wall plugs.
6. Electrical bathroom products should only be fitted by a suitably qualified electrician.
7. Ensure the domestic electrical mains supply to which the mirror is being connected is turned off. Connect the domestic mains supply to the terminal box according to the wiring diagram.
8. Move cables away from hot spots.
9. Avoid leaving cables tightened.
10. Check the electrical installation is not damaged by fasteners.
11. Do not cover the luminaire.
12. Do not hang items on the luminaire.
13. Contact the distributor if you need to replace the luminaire or any damaged part.



2 years
warranty

Fitting instructions

Please read the instructions and warning carefully before installing the product and ensure this document is kept with the product for future reference to ensure product longevity and in the interest of safety

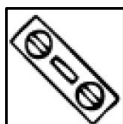
- This product is intended for domestic use only.
- Not for use in saunas, steam rooms.
- It is recommended that this product is installed by 2 people who are able to meet the level of competence required in order to comply with relevant regulations.
- This product is designed for installation into a brick or masonry block wall. If mounting onto other substrate, ensure appropriate fixing and batons are used (if required) and the load bearing of the wall is sufficient.
- When drilling use appropriate eye protection.
- Take care when using power tools near water – the use of a residual current device (RCD) is advised.
- Beware of hidden cables or pipes. Take care if drilling on tiled surfaces in case the drill slips.
- Ensure that excessive standing and Surface water is removed from the product to avoid long term damage and spoiling.



Pencil



Tape measure



Spirit Level



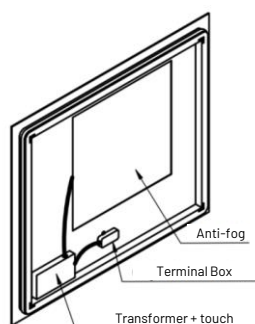
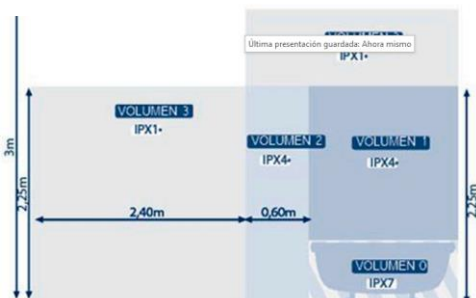
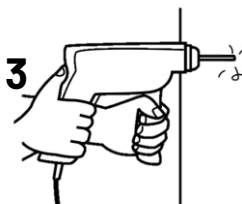
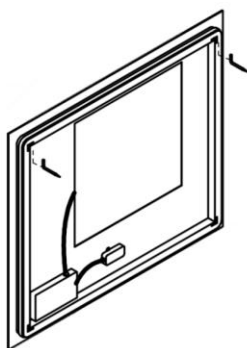
Drill



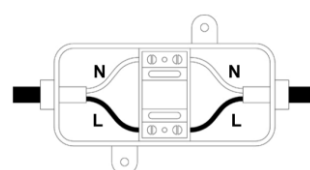
Suitable drill bit Ø6

Light LED mirror (Touch + Anti-fog)

1. Position the mirror in a suitable location.
 2. Mark the position of the mirror ensuring it is level. Remove the mirror and mark the mounting points.
 3. Using a suitable drill bit, drill holes in the marked positions to a suitable depth.
 4. Insert wall plugs level with the surface of the wall.
 5. Screw supplied fixings into wall plugs.
 6. Do not cover the luminaire.
 7. Do not hang items on the luminaire.
 8. Contact the distributor if you need to replace the luminaire or any damaged part.
1. Electrical bathroom products should only be fitted by a suitably qualified electrician.
 2. Ensure the domestic electrical mains supply to which the mirror is being connected is turned off. Connect the domestic mains supply to the terminal box according to the wiring diagram.
 3. Move cables away from hot spots.
 4. Avoid leaving cables tightened.
 5. Check the electrical installation is not damaged by fasteners.
 6. Do not cover the luminaire.
 7. Do not hang items on the luminaire.
 8. Contact the distributor if you need to replace the luminaire or any damaged part.



Terminal Box



2 years
warranty