

# CORIO

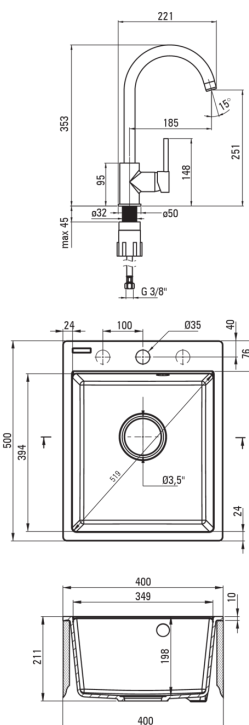
## Granite sink with tap, 1-bowl

**Product code:** ZRCB2103

**EAN:** 5907650868231

**Color:** graphite

**Warranty [years]:** 18



### Sink

|                             |          |
|-----------------------------|----------|
| Finish                      | graphite |
| Surface type                | matte    |
| Material                    | granite  |
| Installation method         | inset    |
| Number of bowls             | 1        |
| Minimum cabinet width [mm]  | 400      |
| Width [mm]                  | 500      |
| Length [mm]                 | 400      |
| Height [mm]                 | 211      |
| Bowl depth [mm]             | 198      |
| Cut-out length [mm]         | 380      |
| Cut-out width [mm]          | 480      |
| Equipped with accessories   | Yes      |
| Number of holes             | 1        |
| Number of pre-drilled holes | 2        |
| Hydrophobicity              | Yes      |

### Sink waste kit

|  |        |
|--|--------|
| Finish   | steel  |
| Plug type  | manual |
| Low siphon/ space saver                              | Yes    |
| Possibility to connect a dishwasher/ washing machine | Yes    |

### Mixer

|                     |                      |
|---------------------|----------------------|
| Finish              | black                |
| Mixer type          | single-handle, mixer |
| Installation method | standing             |
| Flow class [l/min]  | Z - 4-9 l/min        |
| Acoustic group [db] | I (x ≤ 20)           |

### Mixer cartridge

|                        |       |
|------------------------|-------|
| Ceramic cartridge size | 35 mm |
|------------------------|-------|

### Spout

|                        |        |
|------------------------|--------|
| Spout type             | swivel |
| Mixer spout range [mm] | 185    |

### Aerator

|              |           |
|--------------|-----------|
| Aerator type | honeycomb |
| Aerator size | M22       |

### Connecting hose

|                     |      |
|---------------------|------|
| Length [mm]         | 450  |
| Installation thread | 3/8" |
| Connection thread   | M10  |