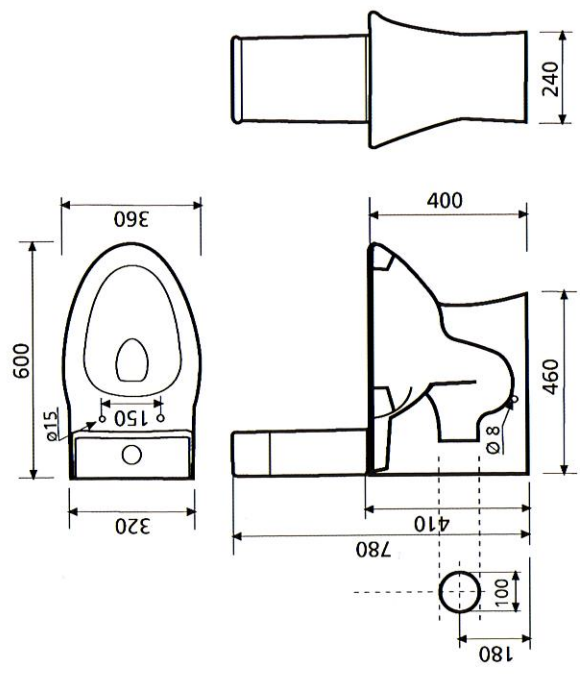




technical drawing

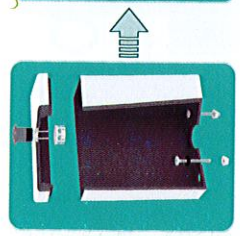


IBIZA

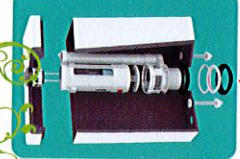
ref. 4501
Toilet with tank



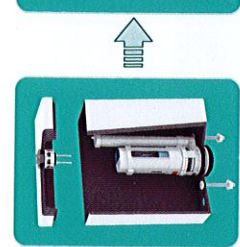
Bajada el Caleruco, 21A
39012 Santander (Spain)
Tel. +34 942 321 222
Fax. +34 942 324 898
thebathcollection@thebathcollection.com
www.thebathcollection.com



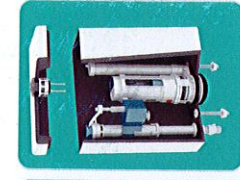
INSTALAR EL BOTÓN DE DESCARGA DE AGUA Y FIJAR LOS TORNILLOS DEL TANQUE.



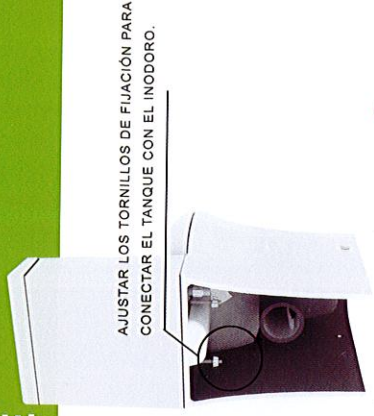
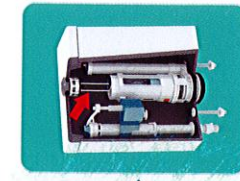
INSTALAR LA VÁLVULA DE DESCARGA DE AGUA



INSTALAR LA VÁLVULA DE ENTRADA DE AGUA



CONECTAR EL BOTÓN A LA VÁLVULA DE DESCARGA.



AJUSTAR LOS TORNILLOS DE FIJACIÓN PARA CONECTAR EL TANQUE CON EL INODORO.

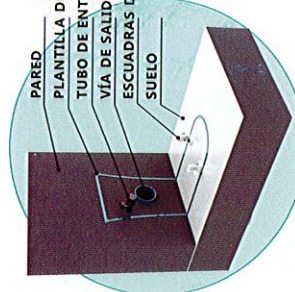
- TAPÓN
- TORNILLO
- BASE
- JUNTA
- TACO

2 INSTALACIÓN DE LA TAPA DEL INODORO

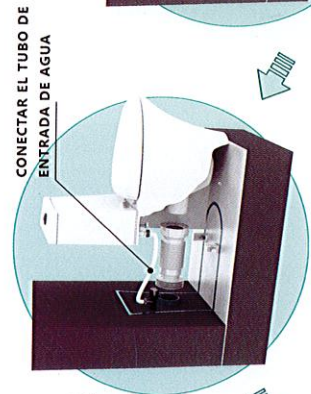


DESPUÉS DE FIJAR LAS BASES EN EL INODORO, INTRODUCIR EL ASIENTO EN LAS BASES AJUSTANDO EL ASIENTO AL MARGEN DEL INODORO. AJUSTAR LAS POSICIONES DE LAS BASES SI FUESE NECESARIO.

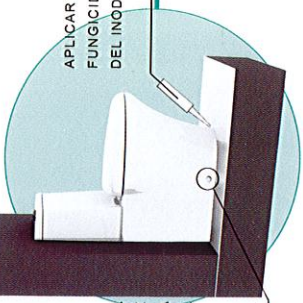
1 MECANISMO DEL TANQUE



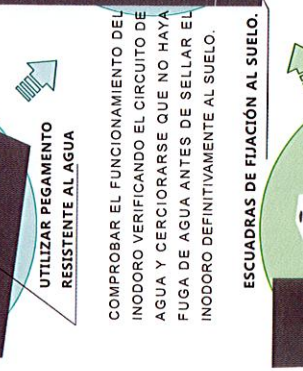
PARED
 PLANTILLA DE FIJACIÓN
 TUBO DE ENTRADA
 VÍA DE SALIDA DEL INODORO
 ESCUADRAS DE FIJACIÓN AL SUELO



CONECTAR EL TUBO DE ENTRADA DE AGUA



APLICAR UN GEL DE SILICONA FUNCIONADA EN EL CONTORNO DEL INODORO AL SUELO.



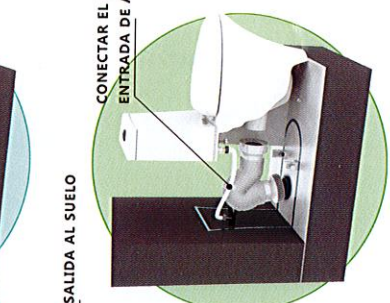
COMPROBAR EL FUNCIONAMIENTO DEL INODORO VERIFICANDO EL CIRCUITO DE AGUA Y CERCIOARSE QUE NO HAYA FUGA DE AGUA ANTES DE SELLAR EL INODORO DEFINITIVAMENTE AL SUELO.

UTILIZAR PEGAMENTO RESISTENTE AL AGUA

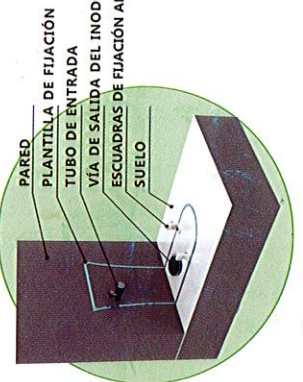
ESCUADRAS DE FIJACIÓN AL SUELO.

3 INSTALACIÓN FINAL

SALIDA HORIZONTAL DEL INODORO (A PARED)
 SALIDA VERTICAL DEL INODORO (AL SUELO)

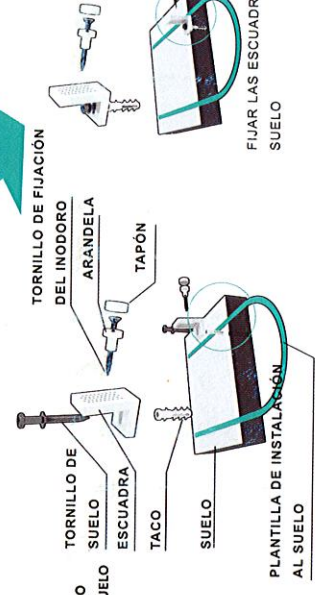


CONECTAR EL TUBO DE ENTRADA DE AGUA



PARED
 PLANTILLA DE FIJACIÓN
 TUBO DE ENTRADA
 VÍA DE SALIDA DEL INODORO
 ESCUADRAS DE FIJACIÓN AL SUELO

4 INSTALACIÓN DE LAS ESCUADRAS DE FIJACIÓN AL SUELO.



TORNILLO DE FIJACIÓN DEL INODORO

ARANDELA

TAPÓN

TORNILLO DE SUELO

ESCUADRA

TACO

SUELO

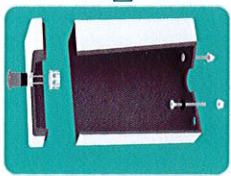
PLANTILLA DE INSTALACIÓN AL SUELO

FIJAR LAS ESCUADRAS AL SUELO

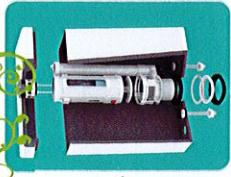
FIJAR EL INODORO A LAS ESCUADRAS DEL SUELO

BOTÓN DE LIBERACIÓN RÁPIDA

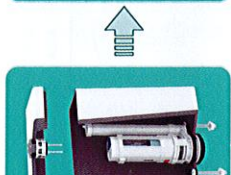
PARA QUITAR EL ASIENTO, PRESIONAR LOS DOS BOTONES DE LIBERACIÓN RÁPIDA Y TIRAR DEL ASIENTO.



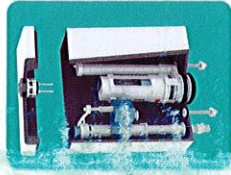
INSTALL THE PUSHING BUTTON AND INSERT THE FIXING BOLTS.



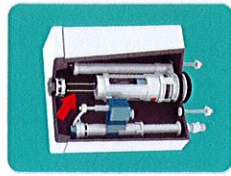
INSTALL THE FLUSHING VALVE.



INSTALL THE INLET VALVE

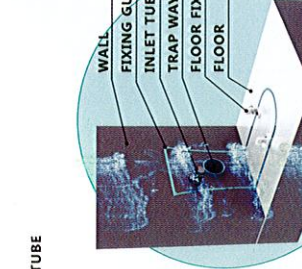
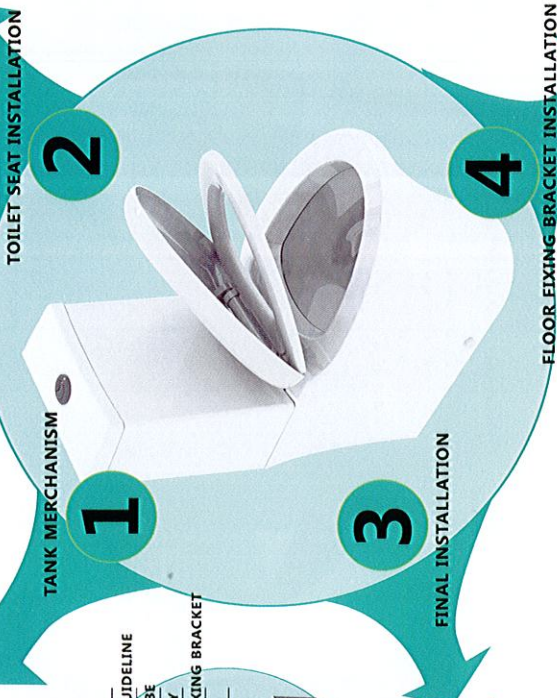
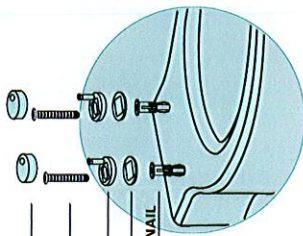


ADJUST THE PUSHING BUTTON TO MATCH THE FLUSHING VALVE

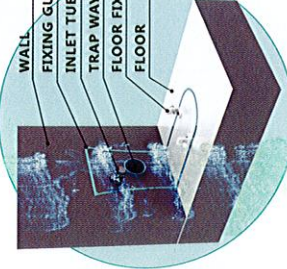


FASTEN THE FIXING BOLTS TO CONNECT THE TANK WITH TOILET

- CAP
- BOLT
- BASE
- GASKET
- EXPANDING NAIL



CONNECT THE INLET TUBE



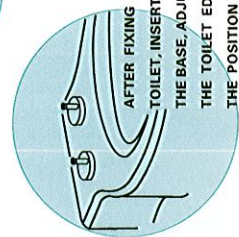
CONNECT THE TRAP PIPE



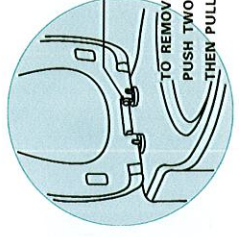
WIPE THE MILDEWPROOF SILICA GEL ON THE CONNECTION OF TOILET BOWL WITH FLOOR (TO THE WALL) S-TRAP (TO THE FLOOR)

PLEASE USE WATER RESISTANT GLUE

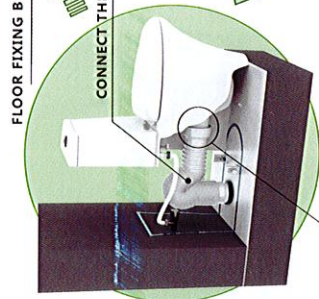
TEST THE TOILET FUNCTION, AND CHECK THE WATER CIRCUIT. MAKE SURE NO LEAKING BEFORE FIXING THE WHOLE TOILET ON THE FLOOR COMPLETELY.



AFTER FIXING THE BASES ON THE TOILET, INSERT THE TOILET SEAT TO THE BASE, ADJUST THE SEAT TO FIT THE TOILET EDGE BY ADJUSTING THE POSITION OF THE BASES.



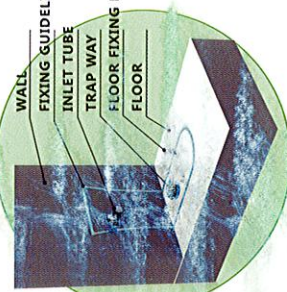
RELEASING BUTTON TO REMOVE THE TOILET SEAT, PUSH TWO RELEASING BUTTONS, THEN PULL THE SEAT AWAY.



CONNECT THE TRAP PIPE

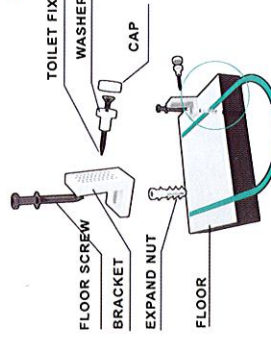
FLOOR FIXING BRACKET

PLEASE USE WATER RESISTANT GLUE



CONNECT THE INLET TUBE

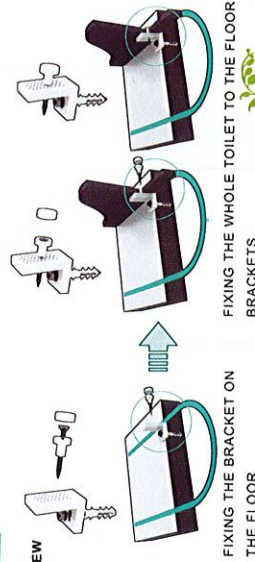
WALL FIXING GUIDELINE
 INLET TUBE
 TRAP WAY
 FLOOR FIXING BRACKET
 FLOOR



FLOOR SCREW
 BRACKET
 EXPAND NUT
 FLOOR

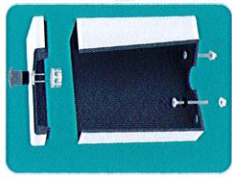
TOILET FIXING SCREW
 WASHER
 CAP

FLOOR INSTALLATION GUIDE/LINE

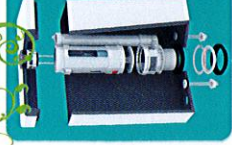


FIXING THE BRACKET ON THE FLOOR

FIXING THE WHOLE TOILET TO THE FLOOR BRACKETS



INSTALLER LE BOUTON D'ÉCOULEMENT D'EAU ET FIXER LES VIS DU RÉSERVOIR.



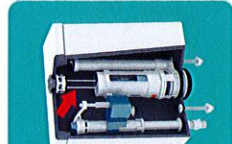
INSTALLER LA SOUPAPE D'ÉCOULEMENT D'EAU



INSTALLER LA SOUPAPE D'ENTRÉE D'EAU

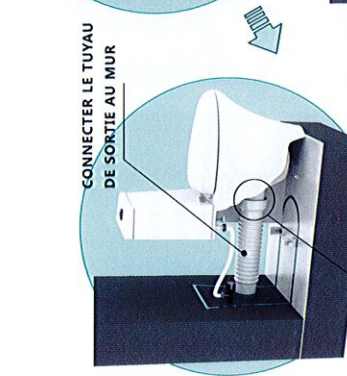
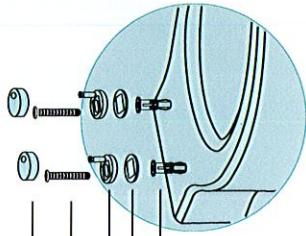


AJUSTER LE BOUTON À LA SOUPAPE D'ÉCOULEMENT D'EAU



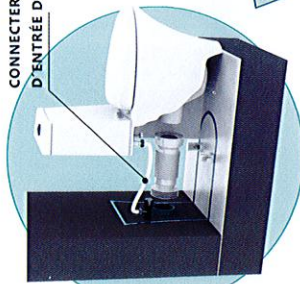
AJUSTER LES VIS POUR CONNECTER LE RÉSERVOIR À LA CUVETTE DE TOILETTE.

- BOUCHON
- VIS
- SOCLE
- JOINT
- CHEVILLE



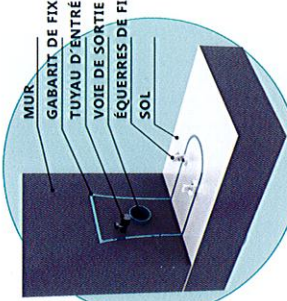
CONNECTER LE TUYAU DE SORTIE AU MUR

UTILISER DE LA COLLE RÉSISTANTE À L'EAU



CONNECTER LE TUYAU D'ENTRÉE D'EAU

APPLIQUER UN GEL DE SILICONE TRAITÉ FONGICIDE SUR LE CONTOUR DE LA CUVETTE AU SOL.



MUR
GABARIT DE FIXATION
TUYAU D'ENTRÉE
VOIE DE SORTIE DE LA CUVETTE DE TOILETTE
ÉQUERRES DE FIXATION AU SOL

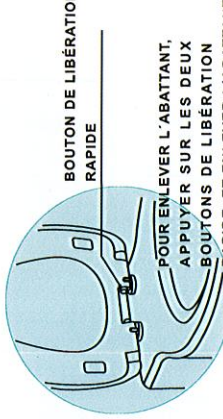


1 MÉCANISME DU RÉSERVOIR D'EAU

2 INSTALLATION DE L'ABATTANT

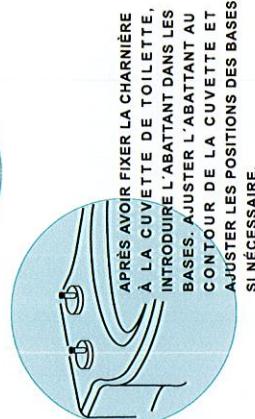
3 INSTALLATION FINALE

4 INSTALLATION D'ÉQUERRES DE FIXATION AU SOL.

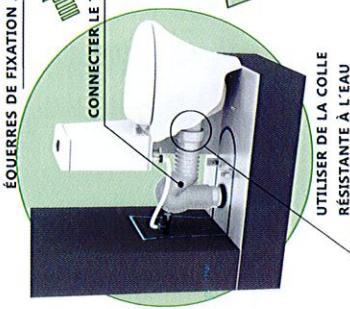


BOUTON DE LIBÉRATION RAPIDE

POUR ENLEVER L'ABATTANT, APPUYER SUR LES DEUX BOUTONS DE LIBÉRATION RAPIDE ET ENLEVER L'ABATTANT.

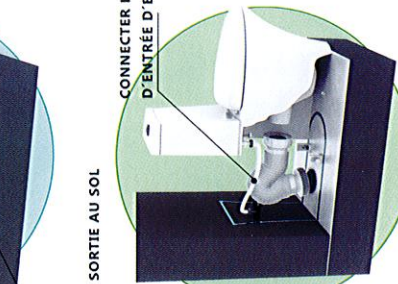


APRÈS AVOIR FIXÉ LA CHARNIÈRE À LA CUVETTE DE TOILETTE, INTRODUIRE L'ABATTANT DANS LES BASES. AJUSTER L'ABATTANT AU CONTOUR DE LA CUVETTE ET AJUSTER LES POSITIONS DES BASES SI NÉCESSAIRE.

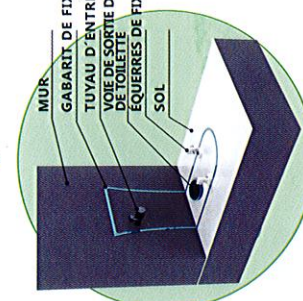


CONNECTER LE TUYAU DE SORTIE AU SOL

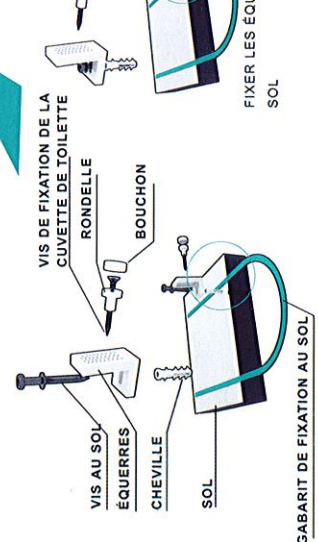
UTILISER DE LA COLLE RÉSISTANTE À L'EAU



CONNECTER LE TUYAU D'ENTRÉE D'EAU



MUR
GABARIT DE FIXATION
TUYAU D'ENTRÉE
VOIE DE SORTIE DE LA CUVETTE DE TOILETTE
ÉQUERRES DE FIXATION AU SOL



VIS DE FIXATION DE LA CUVETTE DE TOILETTE

RONDELLE

BOUCHON

VIS AU SOL

ÉQUERRES

CHEVILLE

SOL

GABARIT DE FIXATION AU SOL

FIXER LES ÉQUERRES AU SOL

FIXER LA CUVETTE AUX ÉQUERRES DU SOL