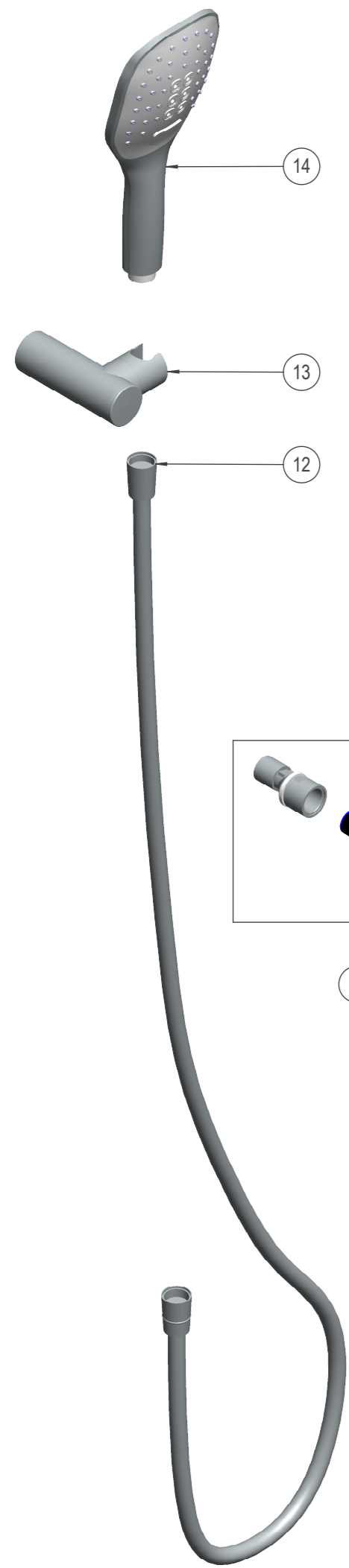


| | | |
|-----------|------------------|--------------------------------------------------------------------|
| 14 | 99Z302621 | 4913 K3 3 FUNCTION SEMISQUARE HANDSHOWER |
| 13 | 261799 | 3726M CHROME SUPPORT ODISEA |
| 12 | 99Z300775 | 2472C PVC SPIRAL CHROME G1/2"--G1/2" FLEXIBLE HOSE 1.75m ANTITWIST |
| 11 | AAZ302187 | 1326NF WALL CYLINDRICAL COVER + ECCENTRIC WITH SILENCER |
| 10 | AAZ300861 | T 3/4" 2C TUERCA SIMPLE 2 CARAS CROMO ALEXIA |
| 9 | AAZ302211 | AGTI2 SREW SEAT THERMOSTATIC WITH LEFT THREAD |
| 8 | 181680 | ARD 15 CHECK VALVE FOR SHOWER Ø15 |
| 7 | AAZ302600 | 2159INE CHROME NEUTRAL HANDLE FLOW URBAN CHIC |
| 6 | 184308 | 1700C 1/2. CERAMIC MOUNT |
| 5 | AAZ302194 | RD09M SHOWER CONNECTOR M14-G1/2 TERMOTECH |
| 4 | AAZ302240 | 1703T THERMOSTATIC CARTRIDGE TERMOTECH |
| 3 | 261920 | ALT5 RING BLOCK TEMPERATURE BLAUTHERM |
| 2 | AAZ302637 | 2151 CHROME HANDLE RS TEMPERATURE URBAN CHIC |
| 1 | 201129 | 3761 SET HANDLE WHEEL COVER + O-RING |
| Nº | Reference | Denomination |



21DE02413.00

| | | |
|---------------------------------------------------------|-------------------------------|------------------|
| Ramon Soler® | | |
| 213401 K3 (213401S+4913K3+3726M+2472C) | | |
| Drawn: C. Rosas | Approved: J. Romero | 21D302413 |